



# HATO

THE NAME OF QUALITY

**HATO 535Y**  
**AUTOMATIC BARRIER**  
OPERATING MANUAL



## Spis treści

RECOMMENDATIONS AND PRECAUTIONS.....	3
DECLARATION OF CONFORMITY.....	4
BARRIER.....	4
SPECIFIATION.....	4
LIST OF ELEMENTS.....	5
DIMENSIONS.....	5
ASSEMBLY AND ADJUSTMENT.....	7
E HELB11SZ ELECTRONICS.....	11
SAFETY RECOMMENDATIONS.....	12
DEVICE DESCRIPTION.....	13
SPECIFICATION (electronics).....	14
DIMENSIONS.....	14
DRIVER ASSEMBLY.....	15
CONNECTION DIAGRAM.....	18
SETTINGS PROGRAMMING.....	19
1.WARRANTY CONDITIONS.....	24

Congratulations on your purchase of **HATO 535Y** automatic barrier and welcome to the users of HATO products. Declarations of conformity and manuals for **HATO TRADE SP. ZOO** products can be downloaded from our website: <http://www.hato.com.pl>

Before assembling and using the barrier for the first time, read the manual carefully and

keep them for future reference.

In accordance with the provisions of the **Machinery Directive 2006/42 / WE**, it is declared that the product may not be put into operation until the final machine, into which it is built or a subassembly of which it is built, obtains a declaration of compliance with the directives and relevant regulations, which the final machine must meet.

## RECOMMENDATIONS AND PRECAUTIONS

Before installing and using the drive, carefully read all warnings and safety rules. Incorrect installation and non-compliance with the standards contained in the manual may result in serious accidents.

- All installation work should be carried out in accordance with applicable regulations and standards.
- The driver installation may only be performed by qualified and authorized personnel.
- Installation should be carried out with basic ESD protection.
- Be especially careful during assembly! The controller uses 230Vac voltage (life and health threatening).
- All works related to the proper functioning of the device (connection, start-up, operation) must be carried out in accordance with the applicable regulations in the field of electrical equipment operation and in accordance with health and safety regulations.
- Do not connect the drive to the power supply earlier than specified in the manual, failure to do so may result in electric shock.
- Before starting the installation, check the mechanical condition of the barrier: it should not sway excessively, it should move easily and smoothly.
- Before installation, remove unnecessary items and secure accessories, such as locks.
- During assembly, children, handicapped persons and motor vehicles must not be in the vicinity of the barrier.
- All fixed control elements should be located near the barrier, but away from moving parts and out of the reach of outsiders.
- Before repairing or removing any parts of the barrier, disconnect power.
- Children and people with intellectual disabilities cannot control the barrier on their own.
- Configuration of overload and thrust settings may only be performed by qualified personnel.
- Fluorescent lamps must not be used as traffic lights.



**AUTOMATIC BARRIER IS NOT  
INTENDED FOR PEDESTRIAN TRAFFIC**



**This product may only be used for its intended purpose. Improper use is improper and dangerous. The manufacturer of the product is not liable for any damage caused by improper or negligent use.**



■ Failure to follow the instructions above may result in serious injury or equipment damage. The manufacturer is not liable for damage and malfunctions resulting from failure to observe these installation and operating instructions.

In accordance with the regulations in force on the disposal of waste equipment by private users in the European Union, items bearing this symbol **MUST NOT** be disposed of with other rubbish. In this case, the user is responsible for proper disposal by delivering the device to a designated point, or to the manufacturer who will take care of its further disposal. Separate collection and recycling of unnecessary devices helps to protect the environment and ensures that disposal is done in a way that protects human health and the environment. This note also applies to waste batteries and accumulators.

## DECLARATION OF CONFORMITY

The **HATO 535Y** automatic barrier meets the requirements set out in the following regulations:  
Complies with the conditions of the Machinery Directive 2006/42 / EC Annex II Section B as amended.

Complies with the conditions of the following EU directives:  
Directive on electromagnetic compatibility EMC 2014/30 / EU  
Low Voltage Directive LVD 2014/35 / EU

The following harmonized standards have been applied:  
EN60335-1: 2012, EN 60335-2-103: 2015-3, EN 55014-1: 2012,  
EN 55014-2: 2015-06,  
EN 61000-3-2-2014-10, EN 61000-3-3: 2013-10

the current declaration can be downloaded from the manufacturer's website [www.hato.com.pl](http://www.hato.com.pl)

BARRIER

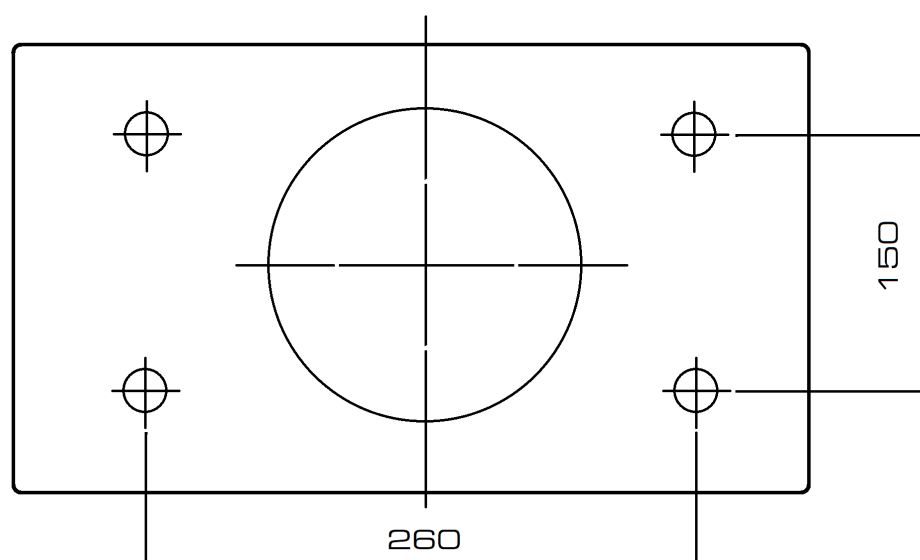
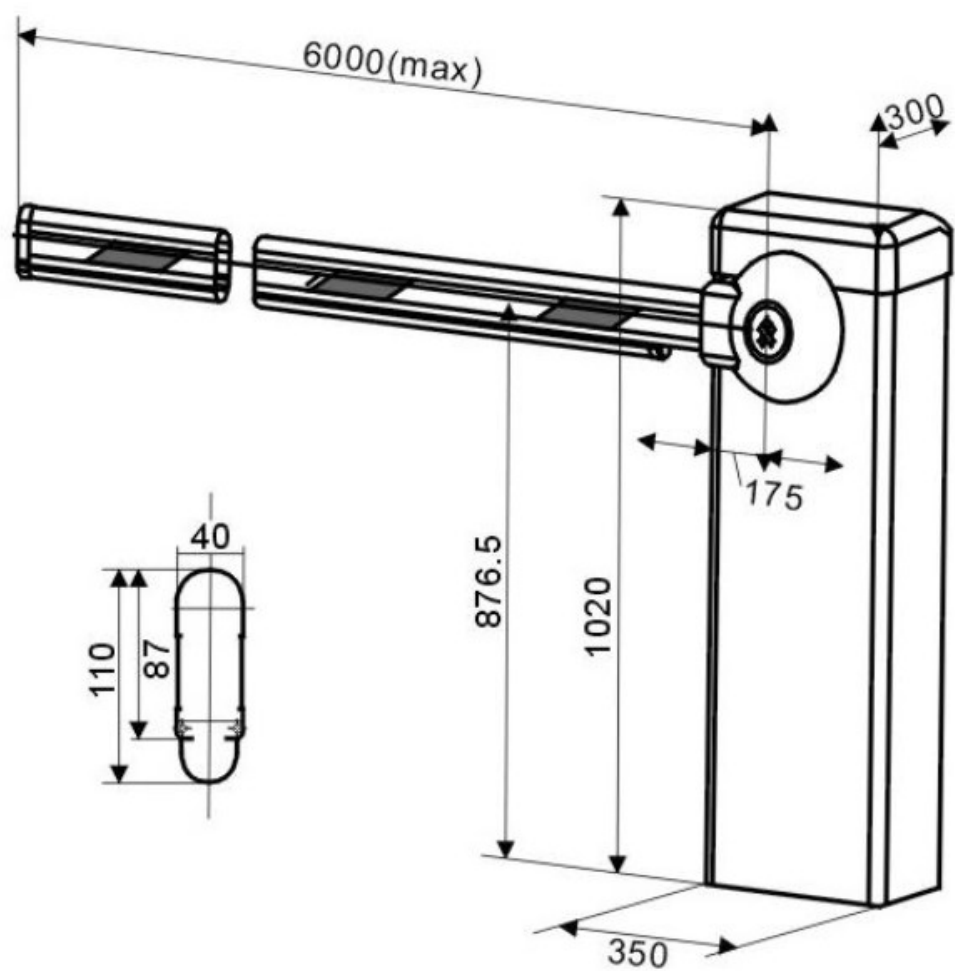
SPECIFICATION

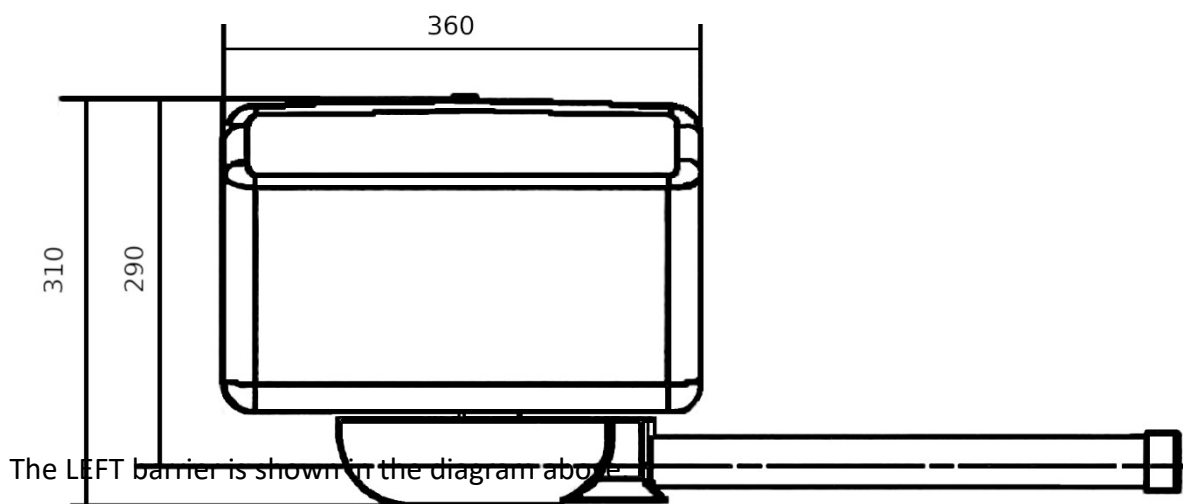
<b>Model</b>	<b>HATO 535Y</b>
Power supply	220×(1±10%)V 50Hz
Engine power	180W
Lowering/lifting time	3.5s
Working range of time	30m
Noise	≤62dB
Operating temperature	-20°C~+45°C
Dimensions	360 * 230 * 1050
Max. arm length	5m
Weight	60kg
Number of cycles per hour	200

#### LIST OF ELEMENTS

No	Description	Quantity
.		
1	Barrier	1
2	Mounting plate for the barrier arm	1
3	Barrier mounting cover	1
4	Handle	1
5	Remote control	1
6	M12 dowel pin	4
7	M10 x 16 the bolt securing the barrier	4
8	M4 x 5 cover fixing bolt	3
9	M12 washer	4
10	Key	2
11	Manual	1

#### DIMENSIONS





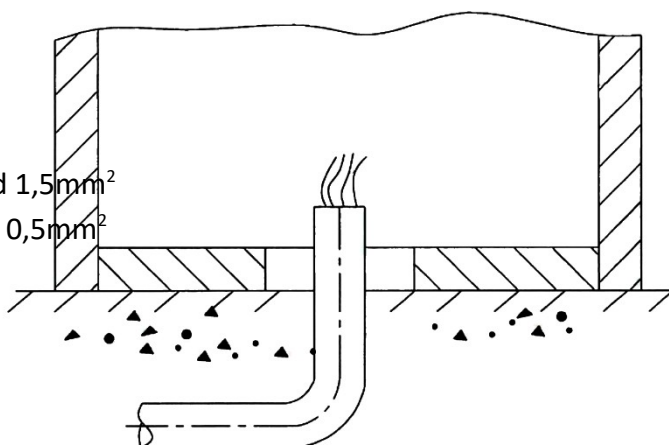
## ASSEMBLY AND ADJUSTMENT

### REQUIRED TOOLS:

- set of keys
- set of screwdrivers
- drill

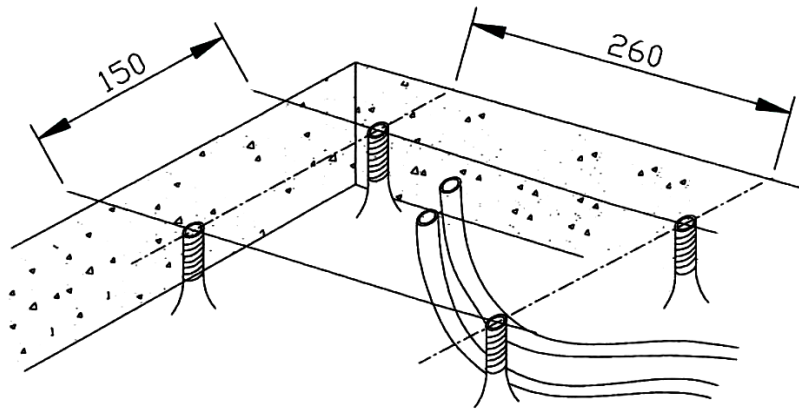
### CORDS:

- power cord 1,5mm<sup>2</sup>
- signal cord 0,5mm<sup>2</sup>



### FOUNDATION:

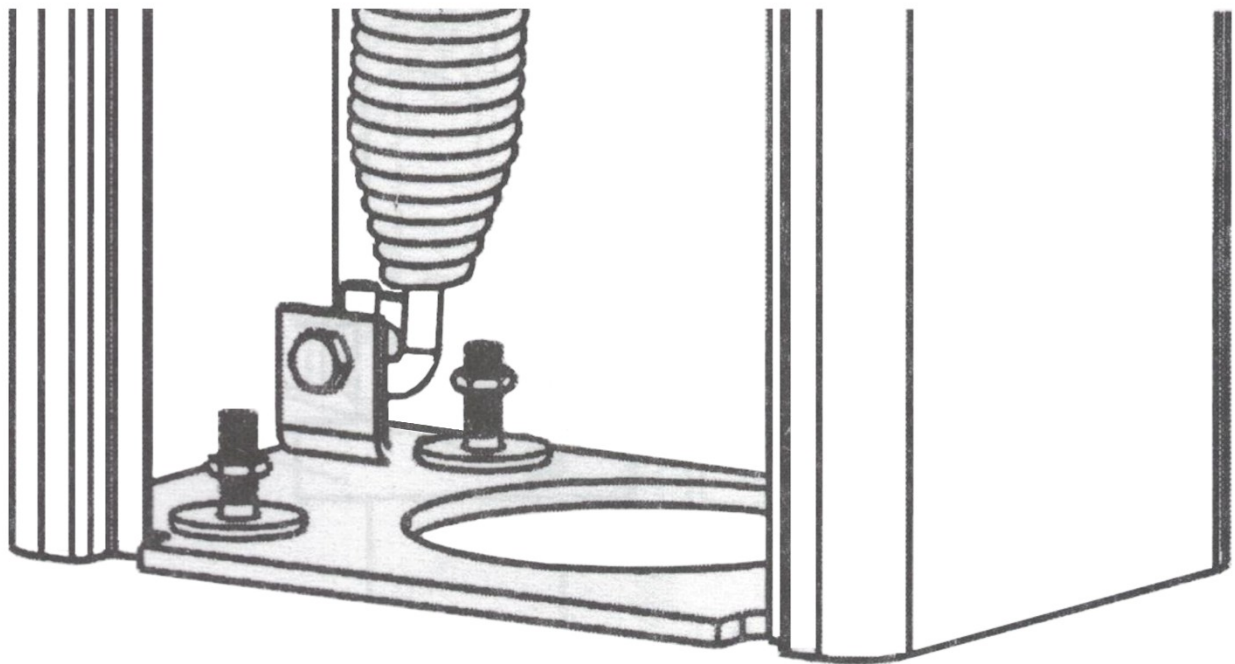
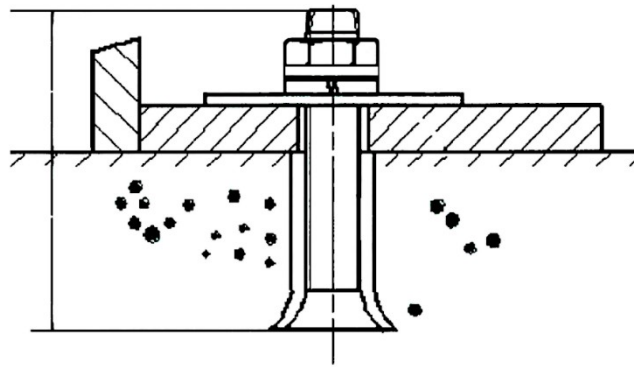
When the foundation is poured under the barrier, a PVC pipe should be placed in it (min. 12mm diameter). This way we can secure the cords brought to the barrier in front of the mechanical device. Diagram above. Power and signal cord should always be separated.



#### **BARRIER (fastening):**

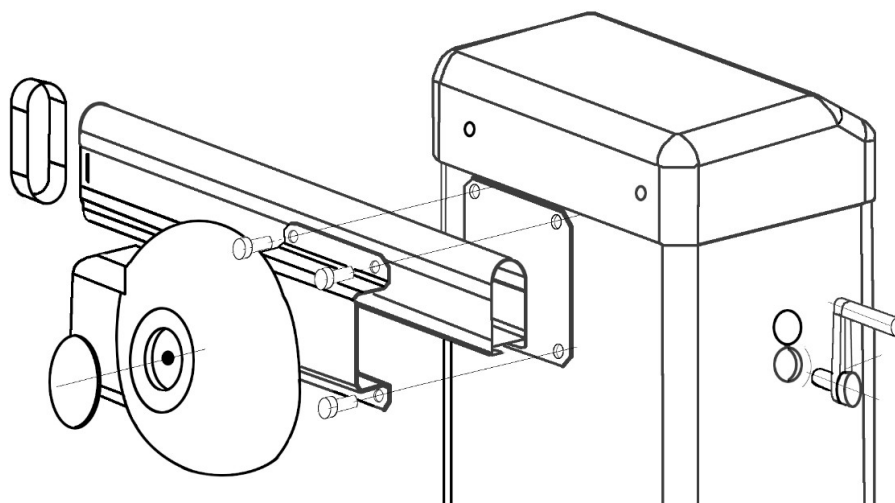
Four M12 fixing bolts can be inserted into the foundation during pouring or alternatively you can drill holes in the foundation and use expansion plugs (supplied).

Hole spacing: 150mm x 260mm. To do this, place the barrier on the foundation and mark the holes. Then move the barrier and drill the holes. Put expansion plugs into the drilled holes or insert the screws into the still wet concrete. Place barrier over the bolts and tighten using the washers and nuts provided.



#### **BARRIER ARM:**

Fit the barrier arm to the barrier and fasten it with four M10x16 screws.



Then mount the barrier cover with three M4x5 screws.

### **EMERGENCY OPENING:**

In case of a power failure, use the handle to manually open or close the barrier.

Before starting manual operation of the barrier, it is necessary to:

- disconnect the power supply to avoid accidental activation of the barrier.
- put the handle in the designated place, covered with a plastic cover.
- turn the handle in the appropriate direction to open or close.
- pull out the handle before turning on the power

### **LIMIT SWITCH** (normally open)

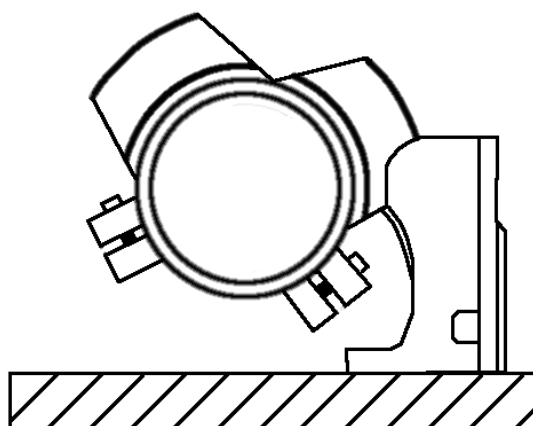
Regulowane wyłączniki krańcowe służą do zatrzymania szlabanu w pozycji otwartej lub zamkniętej.

#### **INITIAL ADJUSTMENT**

- Use the handle to manually set the barrier in the opening position. Loosen the M4 screw of the opening cam and turn the cam until the green indicator light for limit switch open comes on, then tighten the M4 screw.
- Use the handle to manually set the barrier to the closed position. Loosen the M4 screw of the closing cam and turn the cam until the red indicator light for limit switch closed is on, then tighten the M4 screw.

#### **FINAL ADJUSTMENT**

- After adjusting the cams of the limit switch, activate the barrier and check that the pre-adjustment of the position is correct. In a situation when the end positions deviate from the desired ones, already on the attached barrier, it is necessary to precisely adjust the limit switches.



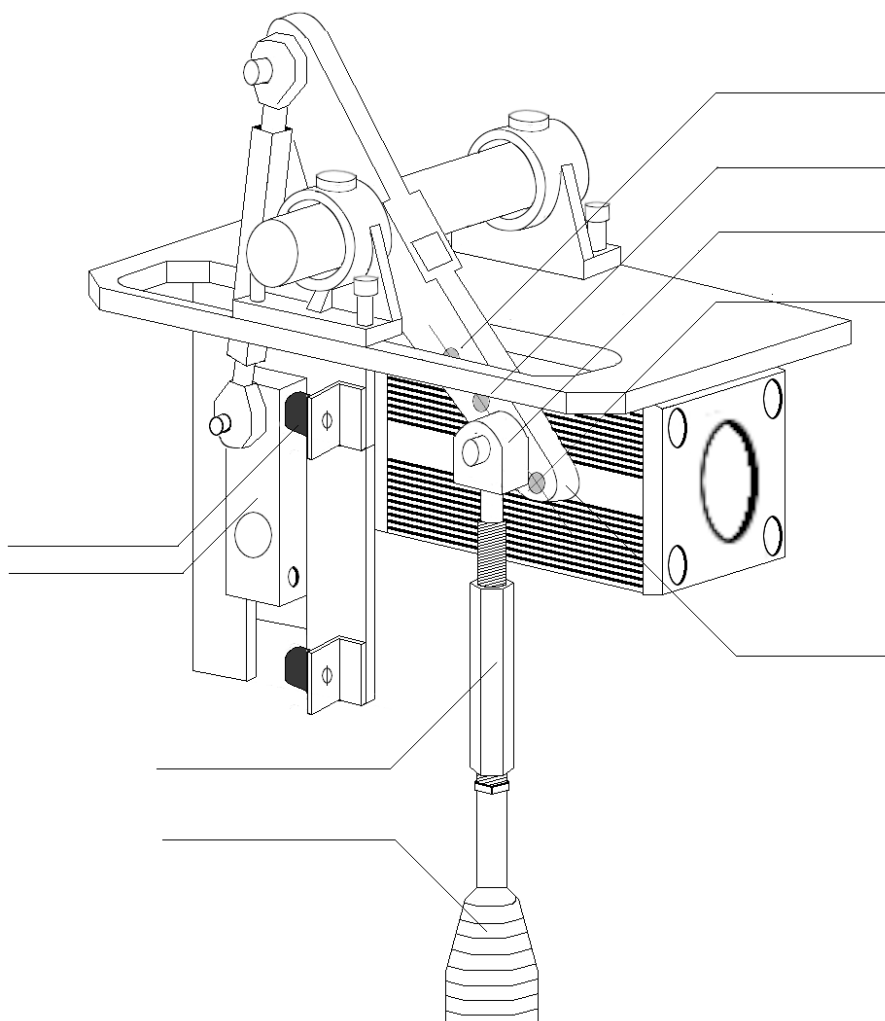
### **SPRING BALANCING:**

Correct adjustment of the balancing spring is crucial for the proper operation of the barrier. The barrier is adjusted in the open position, when the balance spring is loose.

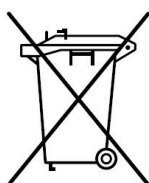
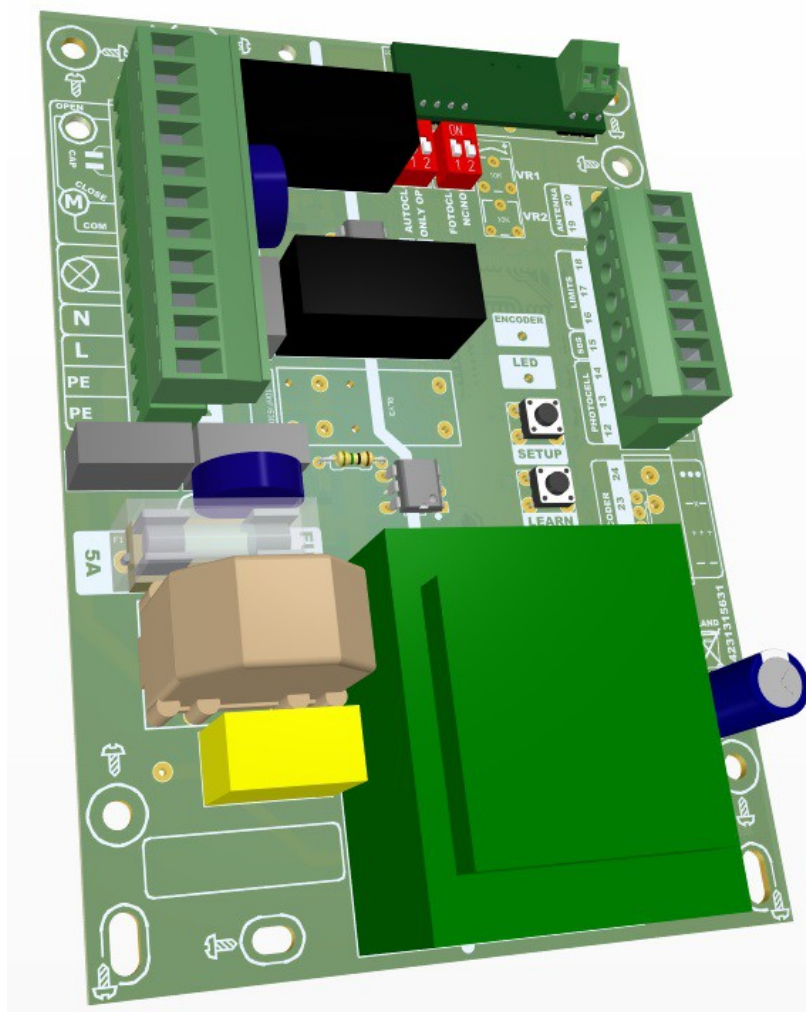
Dźwignia napędu posiada cztery otwory  $\varnothing 15$ , szlaban oryginalnie dostarczany jest z sprężyną balansującą zamontowaną w pierwszym otworze (5-6m), w sytuacji gdy szlaban jest krótszy niż 5m., należy zamontować sprężynę w odpowiedni otwór.

To do this you need to;

- Loosen the spring, bringing the barrier to the open position.
- Loosen the nut and the turnbuckle (turn clockwise)
- Pull out the cotter pin and disassemble the spring mount to the drive lever.
- Select the appropriate hole corresponding to the length of the barrier, install the spring mount and the cotter pin.
- Final adjustment is done with a turnbuckle.
- Tighten the nut



# E HELB11SZ ELECTRONICS



## SIMPLIFIED EU DECLARATION OF CONFORMITY



**PRODUCENT/HEREBY,  
HATO TRADE SP. ZOO  
Żeromskiego 1, 41-205 Sosnowiec**

*hereby declares that the device type HELB11SZ complies with the directives:  
EMC 2014/30/UE, LVD 2014/35/UE, RED 2014/53/UE, ROHS 2011/65/UE, MD 2006/42/UE*

*declares that the equipment type HELB11 is in compliance with Directives:  
EMC 2014/30/UE, LVD 2014/35/UE, RED 2014/53/UE, ROHS 2011/65/UE, MD 2006/42/UE*

*The full text of the EU declaration of conformity is available at the following internet address:  
**hato.com.pl***

## SAFETY RECOMMENDATIONS

**Before assembling and using the controller for the first time, read the manual carefully and keep it for future reference.**

### MARKING OF THE SYMBOLS



**IMPORTANT SAFETY INSTRUCTIONS!**



**INFORMATION!**



**In accordance with the applicable European regulations, the motorized gate must be made in accordance with the Directive 2006/42 / EC. It must also meet, inter alia, standard requirements: EN 13241-1; EN 12445; EN 12453 and EN 12635.**

**In accordance with the provisions of the Machinery Directive 2006/42 / EC, it is declared that the product may not be put into operation until the final machine, into which it is built or a subassembly of which it is built, obtains a declaration of compliance with the directives and relevant regulations, which the final machine must meet.**

### GENERAL RECOMMENDATIONS

- The installer, maintenance person and all users of the drive must read the Assembly and Operating Manual.
- Keep this installation and operating manual in an accessible place.
- Use the product in accordance with its intended use.
- Observe and comply with the health and safety regulations and standards in force in the respective countries.
- Installation, connection, and initial start-up of the drive may only be performed by qualified personnel.
- Only install the drive in correctly fitted gates.
- Before carrying out any work on the drive, disconnect the power supply and secure it against being switched on accidentally. This also applies to battery operation.
- During any welding work close to the gate, disconnect the gate from the power supply and disconnect the electronic circuits.
- The methods of electrical installation as well as its protection against electric shock are defined by the applicable standards and legal regulations.
- Install the safety devices (photocells, safety edges, etc.).
- Install a warning sign - Gate in automatic movement on the gate.
- The manufacturer is not liable for any damage and malfunctions resulting from failure to comply with these installation and operating instructions.



**Follow all installation instructions. Incorrect assembly can lead to serious personal injury.**

## **EXPLOITATION**

- Only use the drive if it is installed in accordance with applicable standards and guarantees the user's safety.
- The barrier may only be used by trained personnel.
- Children and mentally disabled persons cannot control the drive.
- Do not put your hands or other body parts into the moving barrier or its moving parts.
- Do not put any objects or mechanical elements into the moving barrier or its moving parts.
- Only drive through the gate when it is fully opened.
- In the event of automatic closing of the barrier, the edges and the entire working space must be secured in accordance with the applicable standards.
- When the gate is moving, there must be no children, adults, animals or any objects in its work area.
- Regularly check the operation of safety elements.
- Defects that may affect safe use must be repaired immediately.
- The distance between the end of the arm and the nearest object should be more than 0.5 m.
- Under no circumstances should the device be used without the arm or spring fitted.
- For safety, remove crank before reconnecting the power to the machine.
- Use the drive in a non-explosive atmosphere.
- Fluorescent lamps must not be used as traffic lights.
- Do not use the drive in a room with an aggressive atmosphere.
- Carry out inspection and maintenance work at least every 6 months.

## **INSTALLATION**

- Gates (barriers) that are automatically opened with a drive must meet the requirements of applicable standards and directives.
- Use only a technically efficient drive, in accordance with its intended purpose, taking into account the safety and hazard rules and observing the installation and operating instructions.
- The barrier, when opening or closing, must not be located on tilted or not level foundations.
- The barrier must be able to move correctly throughout the entire operating range so that the drive can react precisely and switch the door off in the event of a fault.
- The barrier must not bend or twist when opening and closing.
- Comply with BPH regulations during installation.
- Carry out the installation in accordance with the applicable standards.
- The driver installation may only be performed by qualified and authorized personnel.
- Installation should be carried out with basic ESD protection.
- Do not connect the drive to the power supply earlier than specified in the manual, failure to do so may result in electric shock.

## **SAFETY NOTES**



- It is forbidden to walk or drive under a moving barrier.
- It is forbidden to lift or shift objects or people with the drive.
- The command transmitter should be kept out of the reach of children as they may use it for play.
- The drive may only be started when the entire movement area of the gate is clearly visible and free from obstacles.

## **DEVICE DESCRIPTION**

## PURPOSE

The HELB11SZ controller is designed for barrier drives using 230Vac motors with a power of up to 500W. Perfect for continuous operation, it can be used on private properties and in companies. The applied system of variable coding of Microchip transmitters makes it unavailable to an unauthorized person.

## CONTROLLER ADVANTAGES

- Sterowanie za pomocą nadajników zdalnego sterowania (28 szt.) na częstotliwość 433,92MHz z kodem dynamicznie zmiennym Keeloq.
- Control by means of remote control transmitters (28 pcs.) On the frequency of 433.92 MHz with a dynamic Keeloq code.
- Control on bell buttons.
- AUTO CLOSE function.
- ONLY OPEN function.
- Traffic lights with flashing option.
- The function of shortening the auto-closing time after detecting a passage - PHOTO CLOSE.
- Support for NC and NO limit switches.
- Possibility to install an infrared barrier.
- Simple installation and programming procedure.

## MODE OF ACTION

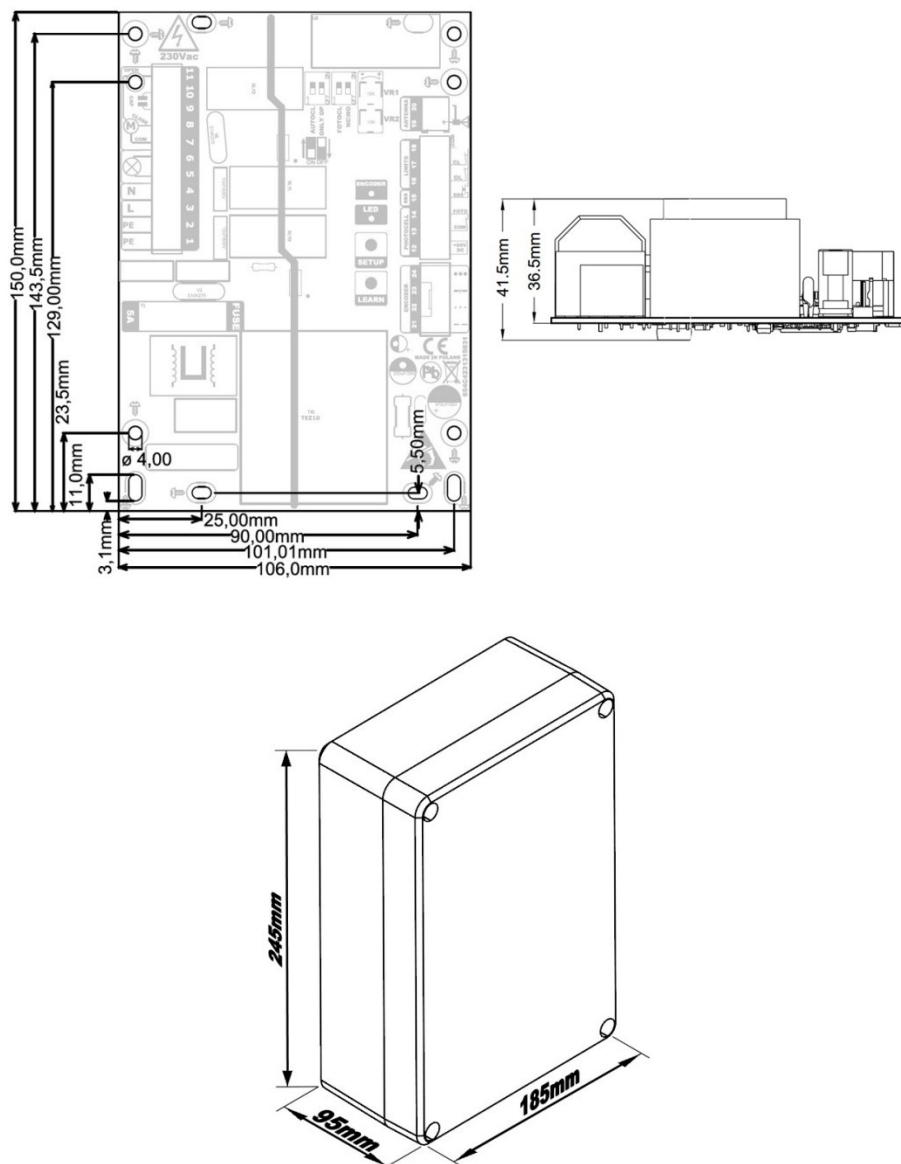
The drive is controlled by means of a transmitter button programmed in eLB11SZ or a bell button of the SBS sequence control. In both cases, the operation consists in carrying out the step-by-step OPEN-STOP-CLOSE-STOP commands or, when the OPEN ONLY function is enabled, only opening the barrier - after the auto-closing time has elapsed, the controller will automatically close it. After turning on the power, the first command is to open, if we give the next command while the barrier is moving, we will stop it, and then we can run it towards closing.

**ATTENTION. When auto-closing is on, if after turning on the power, the barrier is at the opening limit switch, it will close after a programmed time.**

## SPECIFICATION (electronics)

<b>Power supply</b>	<b>AC 230V<sub>+/-10%</sub> 50Hz</b>
Operating temperature range	-20 do +70°C
Standby power consumption	<3 W
Radio receiver	433.92MHz OOK
Reception	do 200m
Memory of transmitters	28 pcs
Motor supply voltage	AC 230V <sub>+/-10%</sub> 50Hz
Maximum engine power	500W
Auto-closing time	0s-25min
Maximum operating time	120s
Fuse type	5A/230V, Ø5x20
Case	IP54
Weight	898g

## DIMENSIONS



## DRIVER ASSEMBLY



Before starting the installation, make sure that all safety recommendations are met.

Any installation work may only be performed by qualified personnel. Electrical installation and connection of electronic devices may only be performed by persons with appropriate electrical qualifications.

1. Turn off the power.
2. Install the controller mechanically.
3. Pull out the quick couplings.
4. Connect the cables to the quick couplers according to the description or connection diagram:

#### 4.1. Connecting the limit switch for opening and closing.



*The controller works as a standard with electromagnetic switches supplied with 5Vdc voltage and with 5Vdc voltage output signal (PNP type).*

The limit switch for opening and closing is used to precisely stop the gate in the closed or open position. Adjust their position so that the gate opens and closes accurately.

24 **+5VDC** – „+“ power supply for sensors (yellow wire),  
 16 **OL** – signal from the opening limit switch (green wire),  
 17 **CL** – signal from the closing limit switch (red wire),  
 23 **COM** – power supply for sensors "-" (white wire).

#### 4.2. Connecting photocells.

The infrared barrier is an essential security element that must be connected to the controller. It prevents the gate from hitting a vehicle, person or object in its light. Photocells are necessary for the correct operation of the device and ensure safety. It is required to connect a safety curtain or other additional protection against crushing in the door clearance. They must be connected in series with the photocells

##### **Photocells**

12 **+24VDC** – plus power for photocell  
 13 **COM** – minus power for photocell  
 13 **COM** – photocell COM output  
 14 **FOTO** – NC contact of the photocell



*The power supply of the 24V connector is <450mA, therefore make sure that the total power load does not exceed this current value. An exemplary photocells connection diagram is shown in fig. 2.*

#### 4.3. Connection of manual control.

Connection of the manual control should be made with a 2x 0.5mm cable (the cable type should be in accordance with CEI 20-22; CEI EN50267-2-1 standards), the maximum length of the manual control cable depends on its electrical parameters, therefore it should be assumed the following rule that with the required cable length, its resistance should not exceed 100ohm. As a standard, the use of a cable with a cross-section of 0.5 mm and a length of not more than 20 m is sufficient for the correct operation of the controller, for required greater distances, 4x0.5 (mm) cables can be used by connecting the wires in parallel - in pairs, or by increasing the cross-section of the cable (2x 1mm).

15 **SBS** – bell button  
 18 **COM**



*Next, make the electrical connections of the connector on the left side as shown in fig. 2.*

4.4. **Capacitor connection.**

Connect a capacitor to connector numbers 9 and 10, polarity does not matter.

4.5. **Connecting the motor..**

The motor connection should be made in accordance with the description:

**7 COM** – common engine wire

**11 OPEN** – motor cable to activate it in the opening direction

**8 CLOSE** – motor cable to actuate it in the closing direction

**1 PE** – PE protective conductor

4.6. **Connection of signal lighting.**

Connecting the bulb with a power not exceeding 15W / 230V should be made to connectors 5 and 6:

**5** – the neutral wire of the lamp

**6** – lamp phase wire



***When using the flashing light function, do not connect the signaling device with the built-in internal circuit breaker. This can damage the driver. When using a signaling device with a built-in circuit breaker, make sure that the light function is set to continuous mode before connecting it.***



***Fluorescent lamps must not be used as traffic lights.***

4.7. **Power connection.**

The last stage of connection is to connect the controller power supply, connect in turn the wires:

**2 PE** – protective conductor

**3 L** – the phase conductor

**4 N** – the neutral conductor



***Protect the controller power supply by using a residual current circuit breaker.***

5. **Put the quick connectors back into the controller.**



***Before starting the device, check the power supply, grounding and wiring. The cables should not be too long, it is not allowed to wind the remaining cable in the so-called "loops", simultaneous routing of the controller power cables, motor and control cables.***

6. **Place the barrier in the middle by hand.**

7. **Turn on the power.**

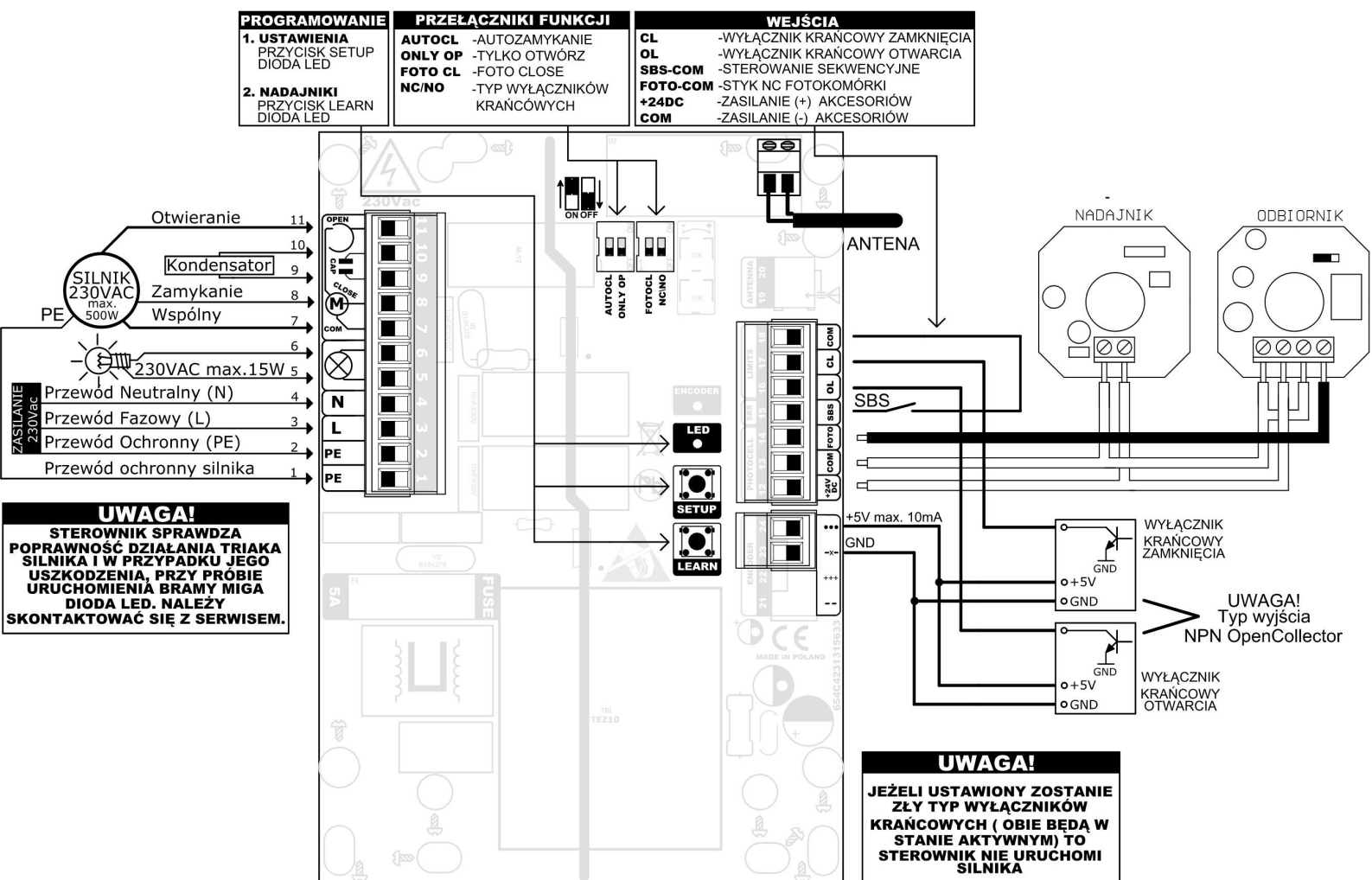
8. **Check the opening direction.**

Pressing the manual control button or the transmitter that has been programmed activates the door in the opening direction, if otherwise, swap the wires connected to the OPEN (11) and CLOSE (8) connectors, after disconnecting the power supply first.

9. **Program the remote control trasmitter.**

10. Check the correct operation of the entire automatic unit and all connected safety, signaling and control elements (limit switches, photocells, edge strip, light signaling etc.).
11. Set the available additional functions.
12. Train all users of the gate.

## CONNECTION DIAGRAM



## SETTINGS PROGRAMMING

Programming the controller is done using the "SETUP", "LEARN" buttons, LED diodes and 4 function switches located on the controller board.

**Programming can only take place when the gate is in stop state. If we start programming the controller during the auto-closing time countdown, the countdown will be stopped and to close the gate, press the SBS button or the remote control transmitter.**

### AUTOCLOSE FUNCTION

After stopping the gate, after the OPEN signal, the time set by the user is counted, after which the CLOSING will take place. The light shines during the countdown. For the user's safety, photocells are required (so that the gate does not close when there is an obstacle in its light!). Additionally, when the PHOTO CLOSE function is on, the photocells will shorten the auto-closing time and after detecting the passage, the gate will close after 5 seconds. Each detected trip will countdown this time again. If the gate is in the fully open position, each signal trying to activate it in the opening direction will start the countdown of the auto-closing time.

**ATTENTION! Stopping the gate with a transmitter or control button during closing stops the countdown and to close the gate, press the control button again - you can use it when you need to leave the gate open for some time.**

To **turn on** the function, set the **AUTO CL** switch to the **ON** position.

To **disable** the function, set the **AUTO CL** switch to the **OFF** position.

### SET THE AUTO-CLOSE TIME

We set it in the range from 15s to 25 minutes in steps of 15s. By default: 6min

Hold down the **SETUP** button for less than 3s. When the button is pressed, the **LED** lights up.



Release the **SETUP** button.



The **LED** will flash rapidly.

Within 5s, start setting the time. Press **SETUP** x times. One press corresponds to 15s. Each press is signaled by the lighting of the diode. If the button is not pressed within these 5 seconds, the controller will set the default time.



After 3s from the last press, the **LED** will flash 3 times. The controller will remember the settings and return to normal operation.




### TRAFFIC LIGHTS

While the gate is moving, the light signaling can work in two modes: as a movement signal (it flashes slowly when the gate opens, and quickly when the gate closes) or a signal for full opening (**DEFAULT SETTINGS**). Additionally, it lights up during the countdown of the auto-

closing time and when the warning signal is on, it blinks 3 seconds before starting the movement.




**ATTENTION! When the motion signaling function is switched off, the function of signaling full opening is active. When the motion signaling is on, the signal of full opening is disabled.**

## SIGNALING OF BARRIER MOVEMENT

Hold down the <b>SETUP</b> button.	
The <b>LED</b> will turn on and then turn off.	
Release the <b>SETUP</b> button.	
The <b>LED</b> will blink rapidly for 2s.	
After the flashing is finished, the <b>LED</b> will show the status of the function. The lighted on means active function, and off the function inactive.	turned on disabled
To change the state of the function to the opposite, press the <b>SETUP</b> button briefly within 3 seconds.	
After 3s from the last press, the <b>LED</b> will flash 3 times. The controller will remember the settings and return to normal operation.	

## WARNING SIGNALS

The warning signal function consists in flashing the lamp for 3 seconds before activating the barrier in the opening or closing direction.

Hold down the <b>SETUP</b> button.	
The <b>LED</b> will turn on, then turn off and on again.	
Release the <b>SETUP</b> button.	
The <b>LED</b> will blink rapidly for 2s.	
After blinking, the <b>LED</b> will show the current status of the function. The lighted on means active function, and off the function inactive.	turned on disabled
To change the state of the function to the opposite, press the <b>SETUP</b> button briefly within 3 seconds.	
After 3s from the last press, the <b>LED</b> will flash 3 times. The controller will remember the settings and return to normal operation.	

## OPEN ONLY FUNCTION

It facilitates entry-exit communication by ensuring that the barrier will not close when another person activates it using a manual control button or a remote control.

**This function only works with AUTO-CLOSE enabled.**

To **enable** the function, set the **AUTO CL** and **ONLY OP** switches to the ON position.

To **disable** the function, set the **ONLY OP** switch to the OFF position.

## PHOTO CLOSE FUNCTION

It enables faster closing of the barrier and saves energy. When the function is switched on, the automatic closing time is shortened, and the gate closes after 5 seconds when the **AUTOMATIC CLOSING** function is detected.

To **turn on** the function, set the **PHOTO CL** switch to the ON position.

To **disable** the function, set the **PHOTO CL** switch to OFF.

## LIMIT SWITCH TYPE

The controller works as a standard with electromagnetic switches supplied with 24Vdc voltage and with 24Vdc voltage output signal. Depending on whether the "+" voltage is supplied in the active state (at the end position) or inactive, set the NC / NO DIP SWITCH accordingly.

**STATUS:** ACTIVE 0V, INACTIVE +24V **NC/NO** switch to ON position.

**STATUS:** ACTIVE +24V, INACTIVE 0V **NC/NO** switch to OFF position.

## CLEARING ALL TRANSMITTERS

When the memory is full or we have problems with programming the transmitters, we must perform the deletion procedure. We recommend that you perform this procedure first right after installing the receiver.

Hold down the **LEARN** button for less than 3s.



The **LED** will flash rapidly.

Within 3 seconds, hold the **LEARN** button again.







The **LED** will blink 3 times.

Release the button. The deletion procedure is complete. When the diode stops blinking, the receiver will return to normal operation.








## PROGRAMMING OF TRANSMITTERS

A maximum of **28** transmitters with a Keeloq dynamic code can be programmed. Each button must be learned separately.

Hold down the <b>LEARN</b> button for less than 3s.	
The <b>LED</b> will flash rapidly.	
Press the transmitter button within 10 seconds.	
Correct programming will be signaled by the <b>LED</b> blinking three times. 2 blinks indicate full memory. 1 blink means the end of the learning time.	
After correct programming, we have another 10s to program the other transmitters, etc.	
To finish the procedure, wait 10 seconds from the last programming or shortly press the LEARN button. Led will blink and the receiver will return to normal operation.	

## REMOTE PROGRAMMING OF TRANSMITTERS – eLB11SZE

Remote programming of transmitters takes place when the barrier **is fully open** and a 4-channel transmitter has been programmed in advance (e.g. type 4E433).

The barrier must be fully open.	
Hold buttons A and B of the programmed transmitter simultaneously for approx. 5 seconds.	 A B
The flashing light will turn on or, if auto-closing is enabled, it will flash once.	OR
Release buttons A and B.	 A B
Within 5 seconds, press the button of the transmitter you want to program.	
Correct programming will be signaled by the LED indicator light blinking three times. 2 blinks indicate full memory. 1 blink means the end of the learning time.	
Validate the operation. After pressing the programmed button, the gate should start.	

## NOTES

[illegible]

[illegible]

**DEAR CUSTOMERS,**

*Thank you for purchasing a HATO product and congratulations on your choice. We guarantee the efficient operation of the device covered by this warranty in accordance with the technical and operating conditions described in the manual. At the same time, we would like to remind you that the installation carried out in accordance with the assembly instructions, proper use in accordance with the instructions for use and carrying out the obligatory maintenance inspections in accordance with the instructions, ensure trouble-free operation of the device.*

## 1. WARRANTY CONDITIONS

1. The Seller provides a guarantee for a period of 24 months - but not longer than 27 months - from the date of sale by HATO. The seller of the device is the performer of the warranty services (guarantor). Defects revealed during this time will be removed free of charge. The repair will be made as soon as possible, not exceeding 14 days from the date of delivery of the device to the HATO POLSKA Service Center. The guarantor reserves the right to extend the above period in justified cases.
  - 1.1. The condition for the validity of the 24-month warranty period is the performance by HATO Polska or its Commercial Partner of one paid inspection between 10 and 12 months from the date of purchase of the product by the User, which must be confirmed by an appropriate entry in the warranty card.
  - 1.2. In the absence of inspection, the warranty ends 12 months from the date of sale.
  - 1.3. The list of Business Partners can be checked at: [www.hato.com.pl](http://www.hato.com.pl) or by calling 32 785 25 42
2. A warranty repair is understood as the performance of specialized activities aimed at removing a defect in a device covered by the warranty. According to the opinion of the HATO service, the device or components, in

which material, construction or production defects are found, and therefore malfunctioning, will be repaired or replaced with a defect-free device. The replaced parts become the property of the seller after servicing. The condition for the use of this warranty is:

2.1. Presentation of the correction of the completed warranty card (seller's stamp, serial number of the device, date of sale, sales document number, buyer's data, date and place of installation, buyer's signature)

2.2. Description of the product defect and a written complaint notification to the seller

2.3. Attaching a valid purchase document (applies to products to which the warranty card is not attached)

3. The warranty does not cover:

a) mechanical, thermal, chemical and any other damage caused by the user's actions or omissions or external force (e.g. atmospheric phenomena, surges or electrical disturbances, electromagnetic disturbances)

b) damage caused by:

- improper installation (inconsistent with the installation manual) and non-compliant use
- intended use or the instruction manual, design changes and modifications made by the user and third parties
- using malfunctioning or damaged products
- using non-original spare parts or accessories other than HATO
- too much work

c) damage to devices previously dismantled or repaired by unauthorized persons

d) devices with a damaged, illegible, incorrectly filled in warranty card or a broken seal

e) damage to devices used intensively and not subject to the required periodic inspection by the installer or other authorized company (the fact of the inspection and the scope of the maintenance activities carried out must be recorded in the warranty card)

f) replacement of parts with a specified lifetime that are subject to wear and tear during normal use: batteries, accumulators, bulbs, fuses

g) maintenance

h) devices where the serial number has been removed, damaged or changed

4. In the event of 4 unsuccessful warranty repairs, generally considered essential, the buyer has the right to replace the goods with a new one, free from defects. If you purchase several devices in one set, the possibility of replacement applies only to the device, the repairs of which have been unsuccessful four times.

5. The buyer is obliged to notify the seller about the defect within 2 days from the date of its disclosure

6. This warranty covers only HATO products installed and used in Poland

7. An unfinished and / or non-stamped warranty card is invalid

8. The warranty does not cover the costs of disassembly, reassembly and commissioning of the product as well as transport to the HATO service.

9. NOTE! The guarantee becomes void if the machine is installed by unauthorized persons.


Pieczęć HATO  
Data zakupu i nr seryjny urządzenia, potwierdzające legalność pochodzenia

Data sprzedaży, nr faktury, pieczęć i podpis sprzedawcy

--	--

Imię i nazwisko kupującego, adres zamieszkania

Podpis klienta

--	--	--

### Data montažu

### Miejsce montażu

Montaż i uruchomienie wykonane przez: (nazwa firmy oraz osoby uprawnionej lub nr uprawnień elektrycznych)

## KARTA PRZEGLĄDÓW OKRESOWYCH I NAPRAW

[illegible]



**www.hato.com.pl**

**HATO TRADE SP ZOO.**

ul. Żeromskiego 1  
41-205 Sosnowiec  
POLAND  
tel. 032-785-25-42  
[www.hato.com.pl](http://www.hato.com.pl)

<p><b>DISTRIBUTOR / SELLER</b></p>
------------------------------------